

SHERMAN WELLS

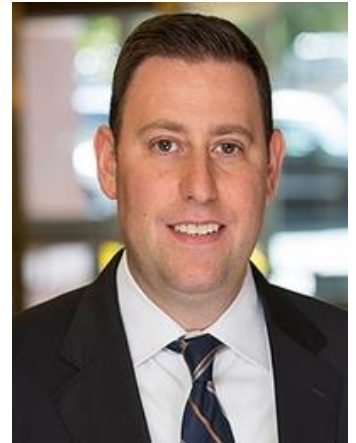
SYLVESTER & STAMELMAN LLP

Proudly Announces Our New Partners and Counsel

Sherman Wells Sylvester & Stamelman LLP is pleased to announce the election of three new Partners, Joshua S. Bratspies, Tracy McSweeney Child and Craig L. Steinfeld, all of whom have been Counsel with the firm since its inception in July 2014. The firm is also pleased to announce the addition of Allison S. Clayton as Counsel.

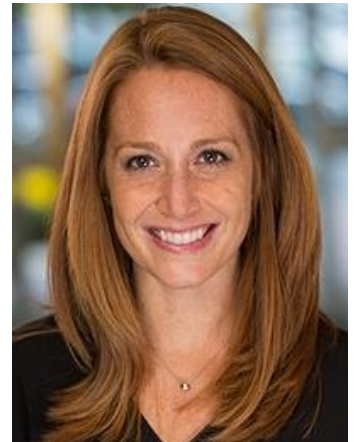
Joshua S. Bratspies

Joshua S. Bratspies is an experienced litigator who represents Fortune 500 companies, closely held businesses and individuals in commercial disputes. Josh has an extensive background in complex litigation, including contract disputes, employment-related matters, intellectual property matters, real estate litigation, banking litigation and trusts and estates litigation. Josh also has extensive experience representing brokerage firms and their employees in securities matters before the Financial Industry Regulatory Authority (FINRA), as well as state and federal courts throughout the country. He has handled hundreds of sales practice arbitrations, securities-backed lending disputes, asset forfeiture cases, regulatory matters and internal investigations over his career. A lifelong resident of Bergen County, Josh is also active in his local community. He serves on the board of the Glen Rock Jaycees, a community-based non-profit organization, and volunteers as a youth sports coach in Glen Rock, New Jersey.



Tracy McSweeney Child

Tracy serves as the head of the New York office and practices in the firm's Tax, Trusts & Estates Group. Tracy counsels clients on a wide variety of estate planning, estate administration and closely-held family business matters, including, among other things, lifetime and testamentary wealth preservation strategies, business succession plans and philanthropy. She meets with individuals, their families and their financial advisors to implement a customized wealth preservation plan, taking into consideration estate, gift, generation-skipping tax, and income tax ramifications and family dynamics. Tracy's unique skills and experience have enabled her to become a trusted advisor to the family entrepreneur as well as to the second and third generations as they take on the transfer and management of family wealth. Tracy has lectured on a variety of estate planning and charitable planning topics. Tracy was recently named a 2015 Leader of the Bar by New Jersey Law Journal, has been named as a Super Lawyer Rising Star since 2009 and has served as a member of the Advisory Board of Peapack-Gladstone Bank since 2014. Also, in 2012 she received a Master of Laws (LLM) in Taxation. Prior to entering the legal field, Tracy was a senior tax associate at Deloitte & Touche LLP and Arthur Andersen LLP. She lives in Monmouth County with her husband and two daughters, Maeve and Sadie.



Craig L. Steinfeld

Craig L. Steinfeld has been a commercial litigator for more than 20 years, representing financial institutions and other companies in commercial disputes in both state and federal courts. Craig has extensive experience representing financial institutions in loan recovery and workouts, commercial foreclosure proceedings, negotiable instruments, commercial transactions and fidelity bond claims. Craig currently serves as the Chair and a member of the Board of Directors of the Banking Law Section of the New Jersey Bar Association and speaks on numerous topics relating to the banking industry. In addition to his work for financial institutions, Craig also has a wide-ranging commercial litigation practice for clients in other industries. Craig also has experience representing artists in royalty claims litigation and defending fuel storage tank manufacturers.



Allison S. Clayton

Allison S. Clayton practices in the Tax and Trusts & Estates Group in New Jersey and New York. She counsels high-net worth clients regarding their lifetime and testamentary estate planning, with the goal of transferring wealth to the next generation while maximizing the benefit of the clients' estate, gift and generation-skipping transfer tax exemptions. She has extensive experience implementing various sophisticated planning techniques, including sales to grantor trusts, grantor retained annuity trusts (GRATs), charitable split-interest trusts and qualified personal residence trusts (QPRTs). Allison also assists clients in the formation and operation of private foundations and public charities. She represents executors in connection with the administration of estates, from the probate process to the preparation of federal and state estate tax returns, and through any federal or state estate tax audit. She has particular expertise advising illiquid estates and estates owning significant family business interests regarding the options for paying their estate tax obligations without liquidating their holdings. Allison is a member of the Real Property Trust and Estate Law Section of the New Jersey State Bar Association and is a past co-chair of the Recruitment Subcommittee of the New Members Committee of the New York State Bar Association Trusts & Estates Law Section. Prior to joining Sherman Wells, she was an Associate in the Trusts and Estates Practice Group of Katten Muchin Rosenman LLP in New York City. She lives in Morris County with her husband and two young children, Harry and Sloane.

